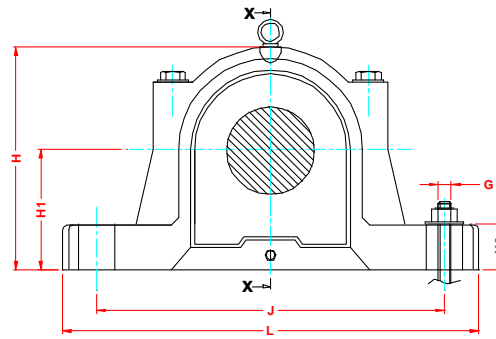
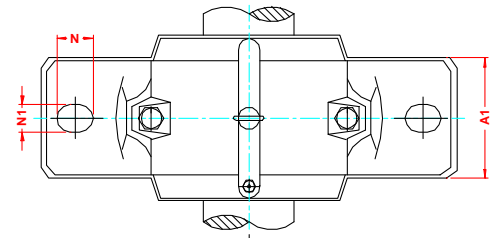


Section xx



Front View



Top view

MASTA SNH PLUMMER BLOCK HOUSING FOR STRAIGHT (CYLINDRICAL) BORE BEARINGS

Plummer Blocks Designation	Shaft Dia da		DIMENSION IN MM												Bearing Number	Locating Ring Size/TWO Nos. per Housing
	da	db	A	A1	Da	H	H1	H2	J	L	Ca	N	N1	G		
SNH 205	25	30	67	46	36.5	74	40	19	130	165	25	20	15	12	1205 E	5/52
															2205 E	3.5/52
															22205 E	3.5/52
SNH 206	30	35	77	52	46.5	89	50	22	150	185	32	20	15	12	1206 E	8/62
															2206 E	6/62
															22206 E	6/62
SNH 305	25	30	82	52	56.5	93	50	22	150	185	34	20	15	12	1305 E	7.5/62
															2305 E	4/62
															21305 CC	7.5/62
SNH 207	35	45	82	52	56.5	93	50	22	150	185	34	20	15	12	1207 E	8.5/72
															2207 E	5.5/72
															22207 E	5.5/72
SNH 306	30	35	85	60	62	107	60	25	170	205	39	20	15	12	1306 E	7.5/72
															2306 E	3.5/72
															21306 CC	7.5/72
SNH 208	40	50	85	60	62	107	60	25	170	205	39	20	15	12	1208 E	10.5/80
															2208 E	8/80
															22208 E	8/80
SNH 307	35	45	85	60	67	109	60	25	170	205	30	20	15	12	1307 E	9/80
															2307 E	4/80
															21307 CC	9/80
SNH 209	45	55	90	60	72	113	60	25	170	205	41	20	15	12	1209 E	5.5/85
															2209 E	3.5/85
															22209 E	3.5/85
SNH 210	50	60	90	60	72	113	60	25	170	205	41	20	15	12	1210 E	10.5/90
															2210 E	9/90
															22210 E	9/90
SNH 308	40	50	95	70	77	127	70	28	210	255	44	24	18	16	1308 E	9/90
															2308 E	4/90
															21308CC	9/90
SNH 211	55	65	95	70	77	127	70	28	210	255	44	24	18	16	22308 E	4/90
															1211 E	11.5/100
															2211 E	9.5/100
SNH 309	45	55	95	70	77	127	70	28	210	255	44	24	18	16	22211 E	9.5/100
															1309 E	9.5/100
															2309 E	4/100
SNH 309	45	55	95	70	77	127	70	28	210	255	44	24	18	16	21309CC	9.5/100
															22309 E	4/100